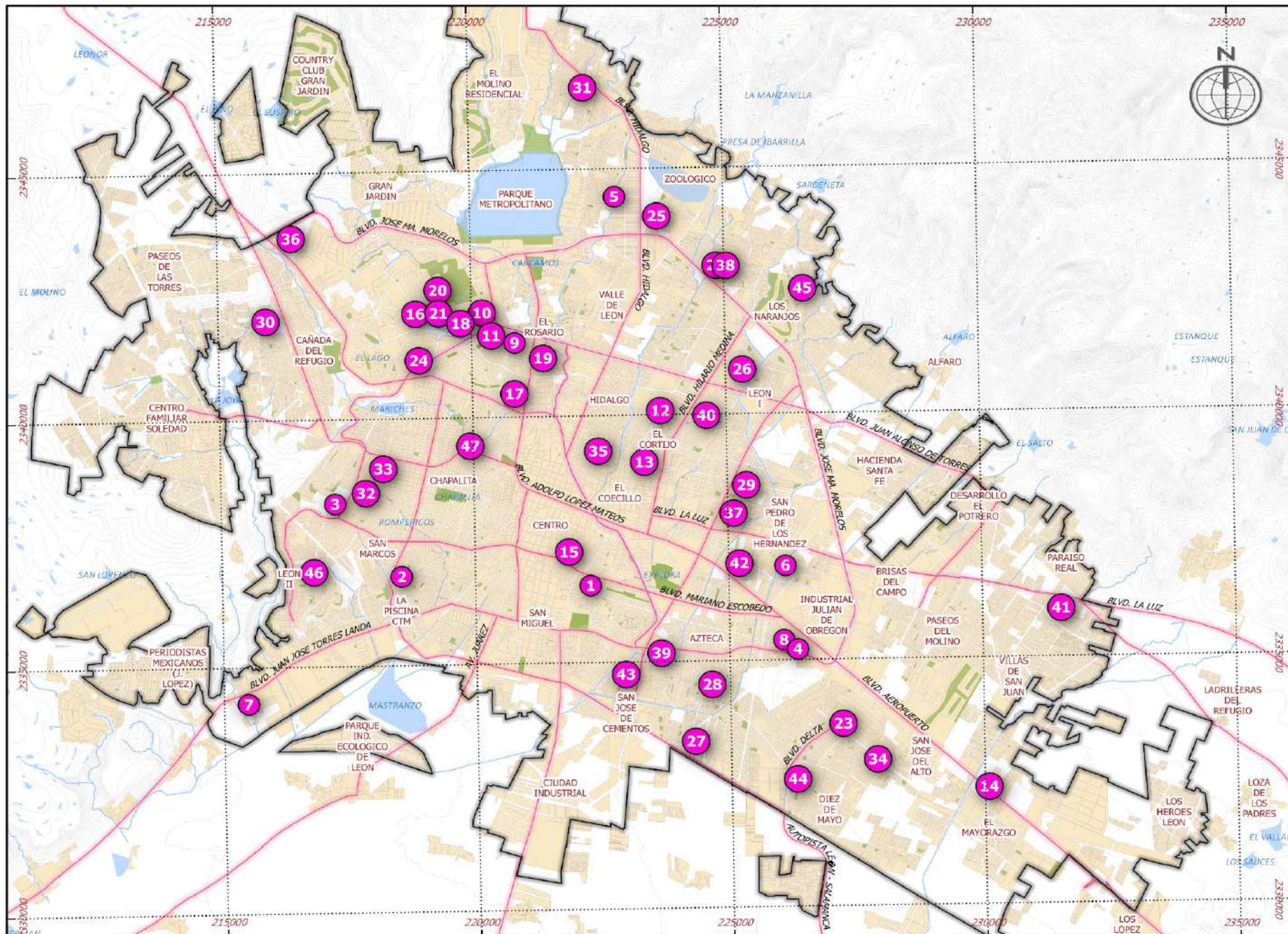


# REGISTRO DE EMISIONES Y TRANSFERENCIA DE CONTAMINANTES (RETC 2018) LEÓN, GUANAJUATO.

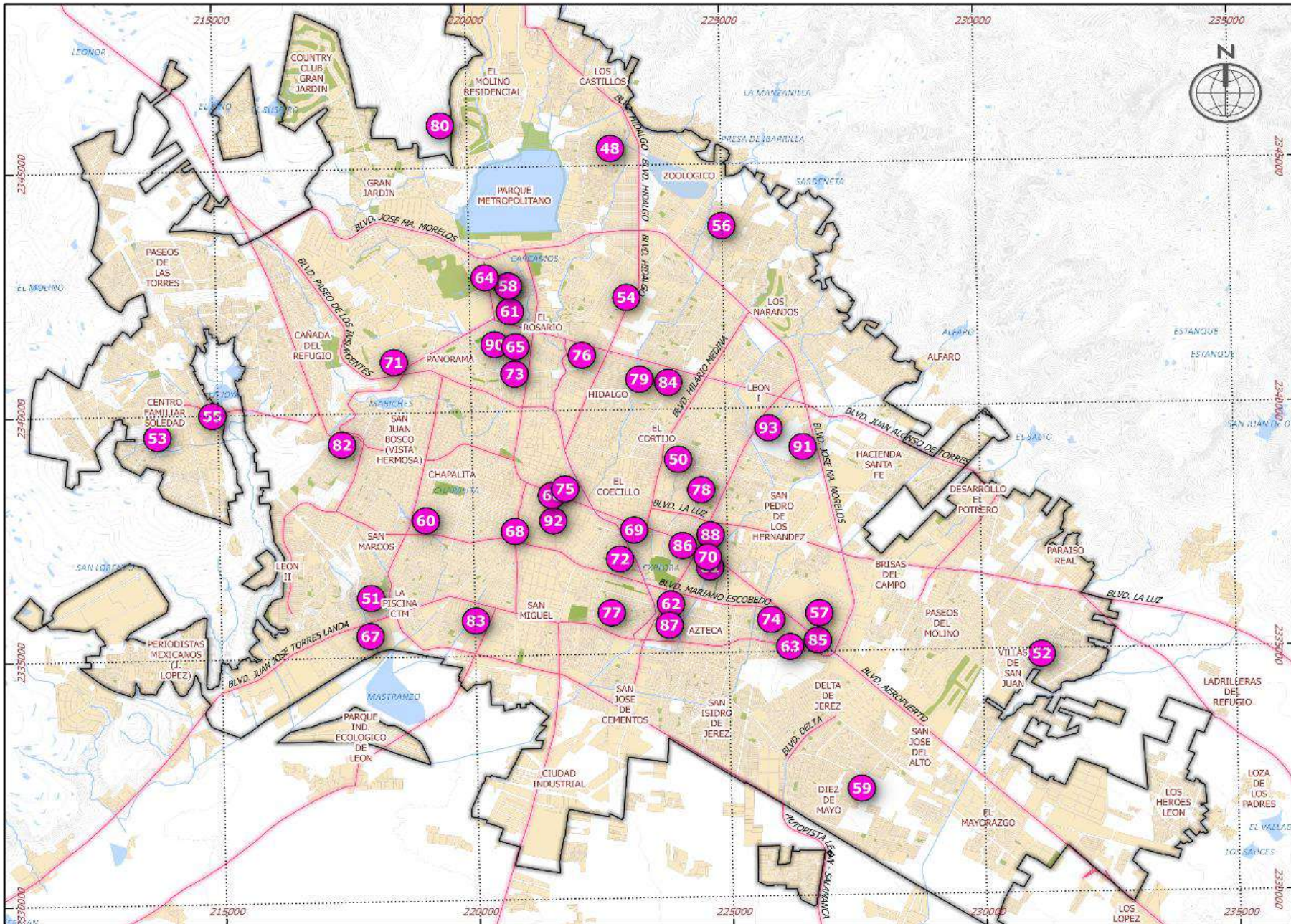


RETC 2018 - León, Gto.

| NÚMERO | NOMBRE  | LATITUD       | LONGITUD       | Kg Emisión de CO <sub>2</sub> |
|--------|---|---------------|----------------|-------------------------------|
| 1      | UNASIL 2000   | 21°6'38.8" N  | 101°40'24.8" W | 47,323.00                     |
| 2      | SMART FIT   | 21°6'43.1" N  | 101°42'37.3" W | 32,657.73                     |
| 3      | TIENDA DE AUTO SERVICIO                             | 21°7'20.5" N  | 101°43'18.5" W | 126,817.40                    |
| 4      | TIENDA DE AUTO SERVICIO                             | 21°5'57.1" N  | 101°38'0.5" W  | 225,820.60                    |
| 5      | BOTANAS   | 21°10'43.1" N | 101°40'12.2" W | 5,004.48                      |
| 6      | CLUB PUNTO VERDE DE LEÓN                            | 21°6'40.5" N  | 101°38'14.9" W | 410,344.43                    |
| 7      | RASTRO FRIGORIFICO Y SERVICIOS INTEGRALES DEL BAJIO | 21°5'18.0" N  | 101°44'21.8" W | 301,756.69                    |
| 8      | RESTAURANTE   | 21°6'17.2" N  | 101°38'9.1" W  | 18,605.32                     |
| 9      | RESTAURANTE   | 21°9'17.1" N  | 101°41'20.2" W | 185,307.63                    |
| 10     | SUBURRIA PLAZA MAYOR                                | 21°9'26.5" N  | 101°41'39.3" W | 29.85                         |
| 11     | RESTAURANTE   | 21°9'23.2" N  | 101°41'39.5" W | 7,797.85                      |
| 12     | TACOS DE ASADA DANY                                 | 21°9'34" N    | 101°39'32.3" W | 2,884.07                      |
| 13     | POLLOS GUERRERO                                     | 21°7'54.2" N  | 101°39'54.8" W | 10,212.67                     |
| 14     | HOTEL GAMMA DE FIESTA IN LEÓN UNIVERSIDAD           | 21°4'15.1" N  | 101°35'52" W   | 101,623.25                    |
| 15     | GRUPO UREDA FUNERARIOS                              | 21°6'49.2" N  | 101°40'46.2" W | 50,583.74                     |
| 16     | TIENDA DE AUTO SERVICIO                             | 21°9'25.7" N  | 101°42'19.8" W | 118,253.70                    |
| 17     | RESTAURANTE GRILLOS                                 | 21°8'34.7" N  | 101°41'10.3" W | 38,816.80                     |
| 18     | FRESKO LA COMER                                     | 21°9'21" N    | 101°41'47.3" W | 214,114.94                    |
| 19     | NISSAN SONI CAMPESTRE                               | 21°9'26.1" N  | 101°41'4.1" W  | 10,426.00                     |
| 20     | CLUB CAMPESTRE DE LEÓN                              | 21°9'53.1" N  | 101°42'9.6" W  | 582,112.02                    |
| 21     | HOSPITAL  | 21°9'26.1" N  | 101°42'4" W    | 418,157.11                    |
| 22     | TIENDA DE AUTO SERVICIO                             | 21°9'58.1" N  | 101°38'58.4" W | 44,521.13                     |
| 23     | TIENDA DE AUTO SERVICIO                             | 21°9'5.7" N   | 101°37'38.5" W | 72,929.87                     |
| 24     | TIENDA DE AUTO SERVICIO                             | 21°8'55.1" N  | 101°42'15.8" W | 84,289.60                     |
| 25     | TIENDA DE AUTO SERVICIO                             | 21°10'35.3" N | 101°39'46.8" W | 91,610.10                     |
| 26     | TIENDA DE AUTO SERVICIO                             | 21°8'49.7" N  | 101°38'47.9" W | 101,562.00                    |
| 27     | TIENDA DE AUTO SERVICIO                             | 21°4'44.8" N  | 101°39'7.7" W  | 588.72                        |
| 28     | TIENDA DE AUTO SERVICIO                             | 21°5'27.9" N  | 101°39'8.2" W  | 294.36                        |
| 29     | TIENDA DE AUTO SERVICIO                             | 21°7'43.7" N  | 101°38'45.1" W | 321.12                        |
| 30     | TIENDA DE AUTO SERVICIO                             | 21°9'20.4" N  | 101°44'13.9" W | 401.40                        |
| 31     | TIENDA DE AUTO SERVICIO                             | 21°12'6.5" N  | 101°40'25.1" W | 133.80                        |
| 32     | TIENDA DE AUTO SERVICIO                             | 21°7'37.9" N  | 101°43'5.2" W  | 481.68                        |
| 33     | TIENDA DE AUTO SERVICIO                             | 21°7'55.4" N  | 101°42'49" W   | 321.12                        |
| 34     | TIENDA DE AUTO SERVICIO                             | 21°4'33" N    | 101°37'13.2" W | 113.30                        |
| 35     | TIENDA DE AUTO SERVICIO                             | 21°7'55.8" N  | 101°40'14.7" W | 401.40                        |
| 36     | TIENDA DE AUTO SERVICIO                             | 21°10'26.9" N | 101°43'56.7" W | 70,357.67                     |
| 37     | TIENDA DE AUTO SERVICIO                             | 21°7'25.1" N  | 101°38'53.7" W | 345,737.38                    |
| 38     | TIENDA DE AUTO SERVICIO                             | 21°9'58" N    | 101°38'59.3" W | 63,359.60                     |
| 39     | TIENDA DE AUTO SERVICIO                             | 21°5'54.3" N  | 101°39'36.3" W | 103,602.65                    |
| 40     | TIENDA DE AUTO SERVICIO                             | 21°8'19.3" N  | 101°39'5.7" W  | 454.92                        |
| 41     | TIENDA DE AUTO SERVICIO                             | 21°6'24.6" N  | 101°35'2.9" W  | 61,754.40                     |
| 42     | TIENDA DE AUTO SERVICIO                             | 21°6'41.9" N  | 101°38'49.7" W | 80,982.12                     |
| 43     | TIENDA DE AUTO SERVICIO                             | 21°5'28.8" N  | 101°39'53.9" W | 615.48                        |
| 44     | TIENDA DE AUTO SERVICIO                             | 21°4'30.1" N  | 101°38'9.5" W  | 1,338.80                      |
| 45     | TIENDA DE AUTO SERVICIO                             | 21°9'44.7" N  | 101°37'53.5" W | 535.20                        |
| 46     | TIENDA DE AUTO SERVICIO                             | 21°6'35.5" N  | 101°43'40.6" W | 535.20                        |
| 47     | TIENDA DE AUTO SERVICIO                             | 21°7'58.9" N  | 101°41'53.8" W | 969.00                        |

MAPA 1 DE 2

# REGISTRO DE EMISIONES Y TRANSFERENCIA DE CONTAMINANTES (RETC 2018) LEÓN, GUANAJUATO.



**RETC 2018 - León, Gto.**

| NÚMERO | NOMBRE                                | LATITUD       | LONGITUD       | Kg Emisión de CO <sub>2</sub> |
|--------|---------------------------------------|---------------|----------------|-------------------------------|
| 48     | TIENDA DE AUTO SERVICIO               | 21°11'12.9" N | 101°40'17.4" W | 481.68                        |
| 49     | TIENDA DE AUTO SERVICIO               | 21°9'41.4" N  | 101°41'27.1" W | 146,614.13                    |
| 50     | TIENDA DE AUTO SERVICIO               | 21°7'56.5" N  | 101°39'30.8" W | 94,668.31                     |
| 51     | TIENDA DE AUTO SERVICIO               | 21°5'13.8" N  | 101°42'58.8" W | 401.40                        |
| 52     | TIENDA DE AUTO SERVICIO               | 21°5'37.2" N  | 101°39'23.6" W | 267.60                        |
| 53     | TIENDA DE AUTO SERVICIO               | 21°8'1.5" N   | 101°49'26.4" W | 80.28                         |
| 54     | TIENDA DE AUTO SERVICIO               | 21°9'45.8" N  | 101°40'6.3" W  | 401.40                        |
| 55     | TIENDA DE AUTO SERVICIO               | 21°8'28.3" N  | 101°44'42.3" W | 481.68                        |
| 56     | TIENDA DE AUTO SERVICIO               | 21°10'21.6" N | 101°39'1.3" W  | 503.09                        |
| 57     | TIENDA DE AUTO SERVICIO               | 21°6'5.6" N   | 101°37'54.4" W | 57,016.55                     |
| 58     | TIENDA DE AUTO SERVICIO               | 21°9'41.4" N  | 101°41'21.1" W | 44,128.61                     |
| 59     | TIENDA DE AUTO SERVICIO               | 21°47'5.9" N  | 101°37'25.3" W | 749.28                        |
| 60     | TIENDA DE AUTO SERVICIO               | 21°7'11.1" N  | 101°42'23.1" W | 89,644.99                     |
| 61     | TIENDA DE AUTO SERVICIO               | 21°9'34.7" N  | 101°41'25.8" W | 51,693.97                     |
| 62     | HOTEL ONE LEÓN POLIFORUM              | 21°6'21.7" N  | 101°39'34.1" W | 37,278.56                     |
| 63     | TIENDA DE AUTO SERVICIO               | 21°5'53.4" N  | 101°38'2.7" W  | 168,297.36                    |
| 64     | SPORT CITY DE LEÓN                    | 21°9'46.9" N  | 101°41'36.4" W | 122,124.75                    |
| 65     | MEDICA CAMPESTRE                      | 21°8'11" N    | 101°41'15.3" W | 85,199.67                     |
| 66     | RESTAURANTE                           | 21°7'22.2" N  | 101°40'45.5" W | 5,278.06                      |
| 67     | LAVARTEX                              | 21°5'58.5" N  | 101°43'0.9" W  | 47,382.96                     |
| 68     | CRFMATOARIO I OURDES                  | 21°6'58.2" N  | 101°41'9" W    | 59,064.74                     |
| 69     | HOTEL HOTSSON                         | 21°7'9.4" N   | 101°40'0.9" W  | 240,662.22                    |
| 70     | HOTEL NH COLLECTION                   | 21°6'59" N    | 101°37'8" W    | 4,180.60                      |
| 71     | CLUB DEPORTIVO CUMBRES DE LEÓN        | 21°8'50.5" N  | 101°42'43.3" W | 34,394.57                     |
| 72     | SANATORIO PABLO DE AMDA               | 21°6'39.9" N  | 101°40'3.9" W  | 42,226.40                     |
| 73     | HOTEL CAMPESTRE INN                   | 21°8'48.7" N  | 101°41'9.3" W  | 111,026.79                    |
| 74     | HOTEL HESTIA INN                      | 21°6'10" N    | 101°38'14" W   | 77,433.18                     |
| 75     | PANADERIA LA ROSA A                   | 21°7'26.5" N  | 101°40'36.4" W | 3,090.00                      |
| 76     | TIENDA LEY HIDALGO                    | 21°8'55.4" N  | 101°40'23.4" W | 61,070.50                     |
| 77     | TIENDA LEY TORRES LANDA               | 21°6'4.1" N   | 101°40'16.2" W | 44,051.97                     |
| 78     | GRUPO FLECHA AMARILLA                 | 21°7'28" N    | 101°39'15.1" W | 720.30                        |
| 79     | JARDINES DEL TIEMPO                   | 21°8'39.5" N  | 101°39'56.7" W | 54,964.77                     |
| 80     | PANQUITTS MASSAN                      | 21°11'27.9" N | 101°40'11.8" W | 79,867.39                     |
| 81     | CHEDRAUI LEÓN POLIFORUM               | 21°8'46.2" N  | 101°39'9" W    | 42,801.34                     |
| 82     | CHEDRAUI SAN JUAN BOSCO               | 21°8'1.4" N   | 101°43'7.1" W  | 51,437.07                     |
| 83     | CHEDRAUI TORRES LANDA                 | 21°8'10.4" N  | 101°41'37.3" W | 75,081.64                     |
| 84     | CHIFORANI I FON CAMPESTRE             | 21°8'37.4" N  | 101°39'37.7" W | 80,461.82                     |
| 85     | HOTEL CITY EXPRESS                    | 21°5'56.3" N  | 101°37'55.4" W | 14,019.29                     |
| 86     | HOTEL COUNTRYARD MARIQUI              | 21°5'48.8" N  | 101°39'14.4" W | 185,064.80                    |
| 87     | SUBURRIA TORRES LANDA                 | 21°5'57.4" N  | 101°39'36.7" W | 3,320.92                      |
| 88     | HOTEL INTERFORUM                      | 21°6'56" N    | 101°39'6.7" W  | 12,648.00                     |
| 89     | VETERINARIA HORTA                     | 21°5'33.7" N  | 101°32'16" W   | 35,288.00                     |
| 90     | RESTAURANTE LA CARRETA                | 21°5'2.4" N   | 101°41'36.2" W | 9,388.00                      |
| 91     | HINHALES CHEPIA                       | 21°8'0.5" N   | 101°37'52.6" W | 41,772.93                     |
| 92     | HOTEL REX                             | 21°7'15.5" N  | 101°40'56.1" W | 76,017.10                     |
| 93     | PANIFICADORA Y PASTELERIA PATITO S.A. | 21°8'18.9" N  | 101°38'29.2" W | 65,447.11                     |

**MAPA 2 DE 2**

ESCALA  
1:90,000

IMPRESIÓN  
OCTUBRE 2019

